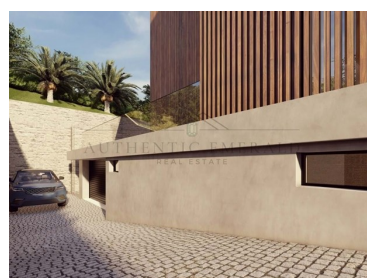




## Loulé - Villa



 4	 5	 425	 693,76			<b>1 950 000 €</b>
Bedrooms	Bathrooms	Area (m <sup>2</sup> )	Land Area (m <sup>2</sup> )	Garage	Swimming Pool	(EUR €)

### Modern Luxury 4 bedroom Villa Under Construction in Loulé

This stunning contemporary villa, currently under construction, is set in the serene and highly sought-after region of Loulé in a quiet cul-de-sac. Designed with the highest specifications, this easy to maintain property combines modern architecture with exceptional attention to detail, offering a perfect blend of luxury and comfort.

Spread across two spacious floors, the villa boasts expansive open-plan living areas, flooded with natural light thanks to floor-to-ceiling windows that seamlessly integrate the indoor and outdoor spaces. The gourmet kitchen is fitted with top-of-the-line appliances, elegant cabinetry, and sleek countertops, perfect for both casual family meals and entertaining.

Each of the generously sized 4 bedrooms features en-suite bathrooms with high-end finishes, walk-in wardrobes, and private terraces overlooking the landscaped gardens and a distant sea view. The



**Roshni Matharu**

Founder & Sales Executive

+351 910 553 925 <sup>2</sup>

roshni@aemerald.com

T +351 910 553 925 <sup>2</sup> · E info@aemerald.com  
Quinta do Lago, Buganvilla Plaza, 1 - 34, 8135-013 Almancil  
AMI 22889

<sup>1</sup> (Call to national fixed network) | <sup>2</sup> (Call to national mobile network)



master suite includes a spa-like bathroom, walk-in closet, and panoramic views of the surrounding distant sea views and countryside. The interior also features a lift which allows access to all floors, including the rooftop terrace.

The outdoor area is equally impressive, featuring a triangular infinity pool, a spacious terrace for al fresco dining, and meticulously designed gardens with native plants for low-maintenance elegance.

Located just minutes from Loulé's historic center and within easy reach of the Algarve's renowned golf courses, beaches, and international airport, this high-spec home offers an unrivaled lifestyle of luxury in a prime location. Completion is scheduled for early 2026, allowing buyers the unique opportunity to personalize certain features and finishes.

This villa promises to be a true architectural masterpiece, ideal for those seeking contemporary elegance in the heart of the Algarve.

Loulé is a charming and historic town nestled in the heart of the Algarve region of southern Portugal. Known for its traditional Portuguese charm and vibrant culture, Loulé is a blend of rich history, stunning architecture, and natural beauty.



**Roshni Matharu**

Founder & Sales Executive

+351 910 553 925 <sup>2</sup>

roshni@aemerald.com

**T +351 910 553 925 <sup>2</sup> · E info@aemerald.com**  
**Quinta do Lago, Buganvilia Plaza, 1 - 34, 8135-013 Almancil**  
**AMI 22889**

<sup>1</sup> (Call to national fixed network) | <sup>2</sup> (Call to national mobile network)



## Property Features

- Air conditioning
- Washing machine
- Fitted wardrobes
- Central vacuum system
- Underfloor
- Proximity: Airport, Mountain, Beach, Golf course, Shopping, Restaurants, Prestigious Beaches , Hospital, Pharmacy, Public Transport, Schools, Public Swimming Pools, Playground
- Built year: 2026
- Views: Sea views, Mountain views
- Storage / utility room
- Lift
- Electric shutters
- Automatic irrigation
- Barbecue
- Terrace
- Heating
- Dishwashing machine
- Under floor heating
- Equipped kitchen
- Pool
- Jacuzzi
- Energetic certification: A
- Basement
- Security alarm
- Double glazing
- Electric garage gate
- Solar heating
- Domotics
- Garage



**Roshni Matharu**

Founder & Sales Executive

+351 910 553 925 <sup>2</sup>

roshni@aemerald.com

**T +351 910 553 925 <sup>2</sup> · E info@aemerald.com**  
**Quinta do Lago, Buganvilia Plaza, 1 - 34, 8135-013 Almancil**  
**AMI 22889**

<sup>1</sup> (Call to national fixed network) | <sup>2</sup> (Call to national mobile network)