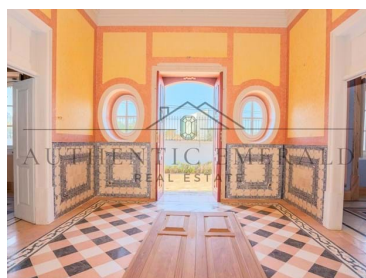




## Almancil - Farmhouse



 **5** Bedrooms  
 **3** Bathrooms  
 **722** Area (m<sup>2</sup>)  
 **19419** Land Area (m<sup>2</sup>)  
**1 950 000 €** (EUR €)

## Exceptional historical Quinta for sale located between Quinta do Lago and Vale do Lobo

Immerse yourself in the perfect blend of history and comfortable living with this meticulously refurbished historical Quinta, ideally situated between the prestigious enclaves of Quinta do Lago and Vale do Lobo. This unique estate has been thoughtfully restored, seamlessly marrying its rich historical roots with modern sophistication, creating a residence that epitomizes timeless elegance and comfort.

The exterior of the property exudes character with its traditional architecture, showcasing the authenticity of its historical origins.

The property is a Portuguese century-old estate, holding a prestigious 19th century Manor House of



**Roshni Matharu**

Founder & Sales Executive

+351 910 553 925 <sup>2</sup>

roshni@aemerald.com

T +351 910 553 925 <sup>2</sup> · E [info@aemerald.com](mailto:info@aemerald.com)

AMI 22889

<sup>1</sup> (Call to national fixed network) | <sup>2</sup> (Call to national mobile network)



350 m2 set on a total plot of 19.400 m2. It used to belong to the same family for generations.

The Manor house was completely restored to a high level of quality utilising original materials.

The main hall opens to a large terrace alongside a Mediterranean garden of 900 m2 where an Octagonal Belvedere is sitting, imitating a summer house or gazebo in 19th-century style.

The property was specially renovated to be used as a restaurant of reference opening on to a panoramic terrace of 500 m2, such as the famous such as the famous "Le Cing", in Paris, which owns three Michelin stars. However, it can serve alternatively as a sophisticated Tea House, suitable for business breakfast or lunch meetings, an Art Gallery for painting exhibitions, a Gourmet Shop for tasting and purchasing the best wines, cheeses and traditional high-quality products, and other selected activities or as an Exclusive Private Members Club, creating a unique meeting place in Algarve, and a forum for business and cultural exchange, suitable for foreign tourists.

Construction on the adjoining land has to be a building of public interest, following the current PDM.

## Property Features

- Proximity: Shopping, Airport, Beach, Golf course, Restaurants, City
- Built year: 19th Century Manor House
- Wine cellar
- Storage / utility room
- Security alarm
- Double glazing
- Borehole
- Quiet Location
- Irrigation System
- Garden
- Drive way
- Basement
- Views: Countryside views
- Guest cottage
- Water Cistern
- Main drainage
- Parking space
- Mains water



**Roshni Matharu**

Founder & Sales Executive

+351 910 553 925 <sup>2</sup>

roshni@aemerald.com

**T +351 910 553 925 <sup>2</sup> · E info@aemerald.com**

**AMI 22889**

<sup>1</sup> (Call to national fixed network) | <sup>2</sup> (Call to national mobile network)